



Eastwood

Commercial and Residential Project

Eastern Bypass, Siliguri



about

EASTWOOD

Step into luxury with Eastwood – a premium residential cum commercial project, designed to fulfil aspirations of refined, spacious living, that is close to nature.

Located on eastern by-pass, Eastwood's commercial block faces the main street for maximum visibility, while the residential block faces dense green forest on the southern side. Planned with holistic amenities & greenery on all sides, plus a lush & recreational terrace garden, Eastwood is your next step into better living.

RESIDENTIAL BLOCK



3BHK & 4BHK Flats



Open forest greenery
on southern side



Total 63 Vaastu
compliant flats





Grand Entrance Foyer & Amenities Block



4 guest elevators



1 separate service elevator with stretcher support



Premium quality framed toughened glass windows



Generator power backup



Common areas covered under CCTV surveillance



Separate CCTV monitoring room



Covered parking available for maximum flats

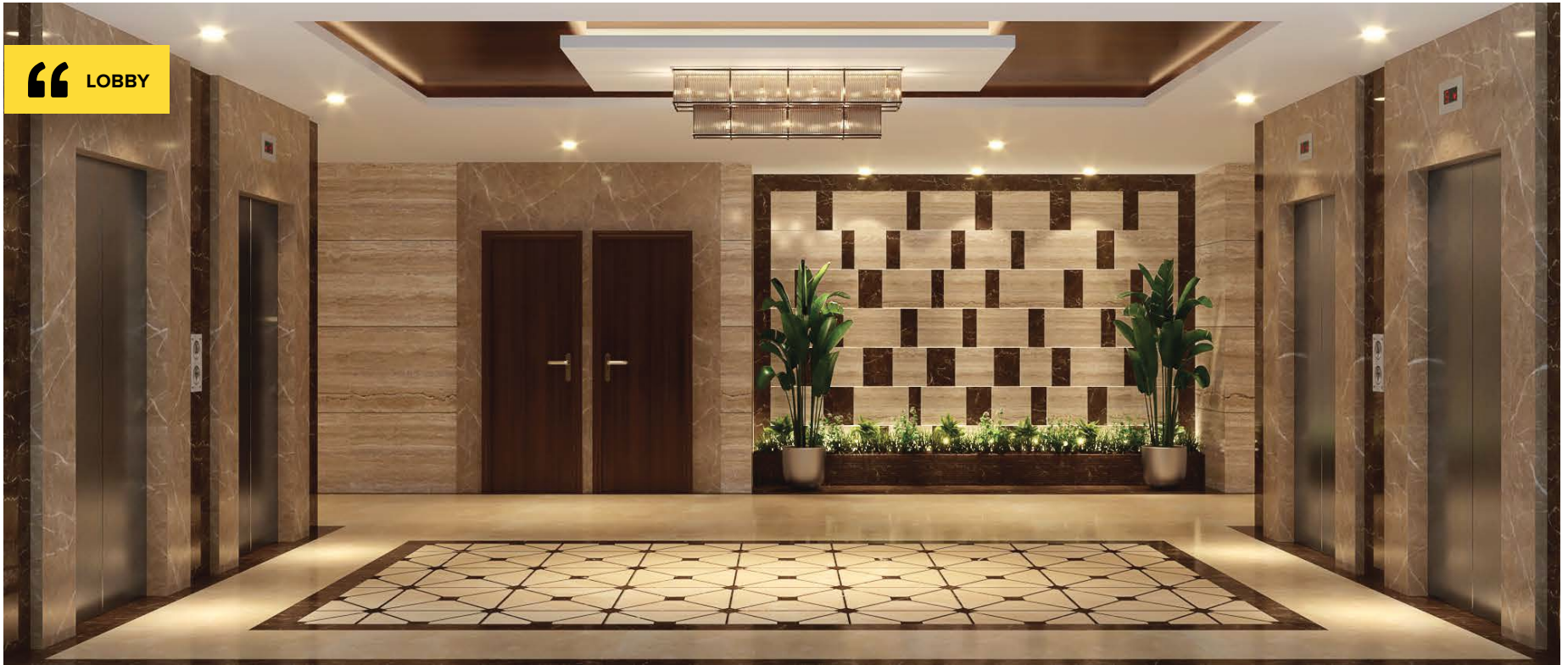


Beautifully landscaped entrance foyer



GENERAL AMENITIES

“ LOBBY



“ BEDROOM



“ LIVING ROOM





Grand entrance foyer



Double height Community hall
with open terrace



Well equipped Gymnasium



Double height Indoor games room



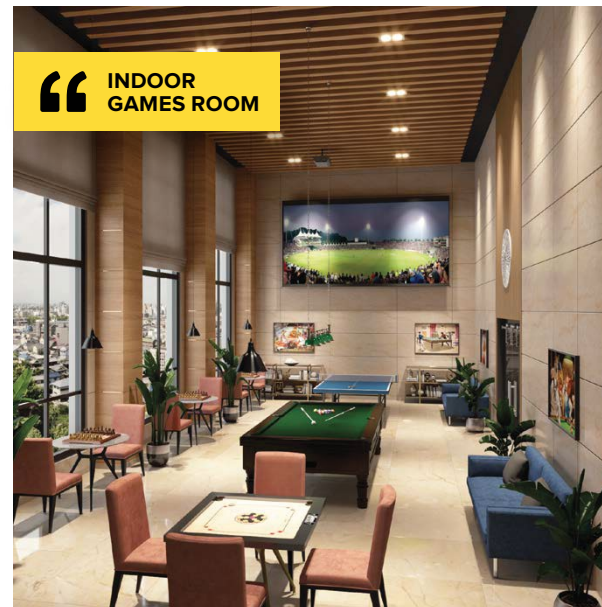
Rooftop Terrace garden covering
entire residential floor plate



Lush green landscaping on
all sides of residential block



Society office



ROOFTOP GARDEN AMENITIES



Party Lawn



Kids play area



Youth Corner



Barbeque Area



Meditation / Yoga Lawn



Swinging Garden



Outdoor Gym



Walking trail



Tree Grove





AREA CALCULATION FOR RESIDENTIAL BLOCK

		RERA CARPET AREA	EXCLUSIVE BALCONY AREA	BUILT UP AREA	SUPER BUILT UP AREA
Flat-A	3BHK	1225	148	1439	1995
Flat-B	4BHK	1653	168	1902	2637
Flat-C	4BHK	1653	169	1902	2637

		RERA CARPET AREA	EXCLUSIVE BALCONY AREA	BUILT UP AREA	SUPER BUILT UP AREA
Flat-D	3BHK	1206	149	1421	1970
Flat-E	3BHK	1269	158	1494	2071
Flat-F	3BHK	1206	149	1421	1970

		RERA CARPET AREA	EXCLUSIVE BALCONY AREA	BUILT UP AREA	SUPER BUILT UP AREA
Flat-G	4BHK	1642	166	1884	2612
Flat-H	4BHK	1653	169	1902	2637
Flat-I	3BHK	1225	148	1439	1995

4BHK



**3 bedrooms with attached bathrooms
and 1 common bathroom**

**1 Dry balcony for washing machine &
clothes drying**

**Air-con points in living room and
all bedrooms**

1 large balcony attached to living room

Master bedroom with attached balcony

Premium brand bathroom fittings

ENTER

3BHK



2 bedrooms with attached bathrooms
and 1 common bathroom

1 Dry balcony for washing machine &
clothes drying

Air-con points in living room and
all bedrooms

1 large balcony attached to living room

Master bedroom with attached balcony

Premium brand bathroom fittings



COMMERCIAL BLOCK



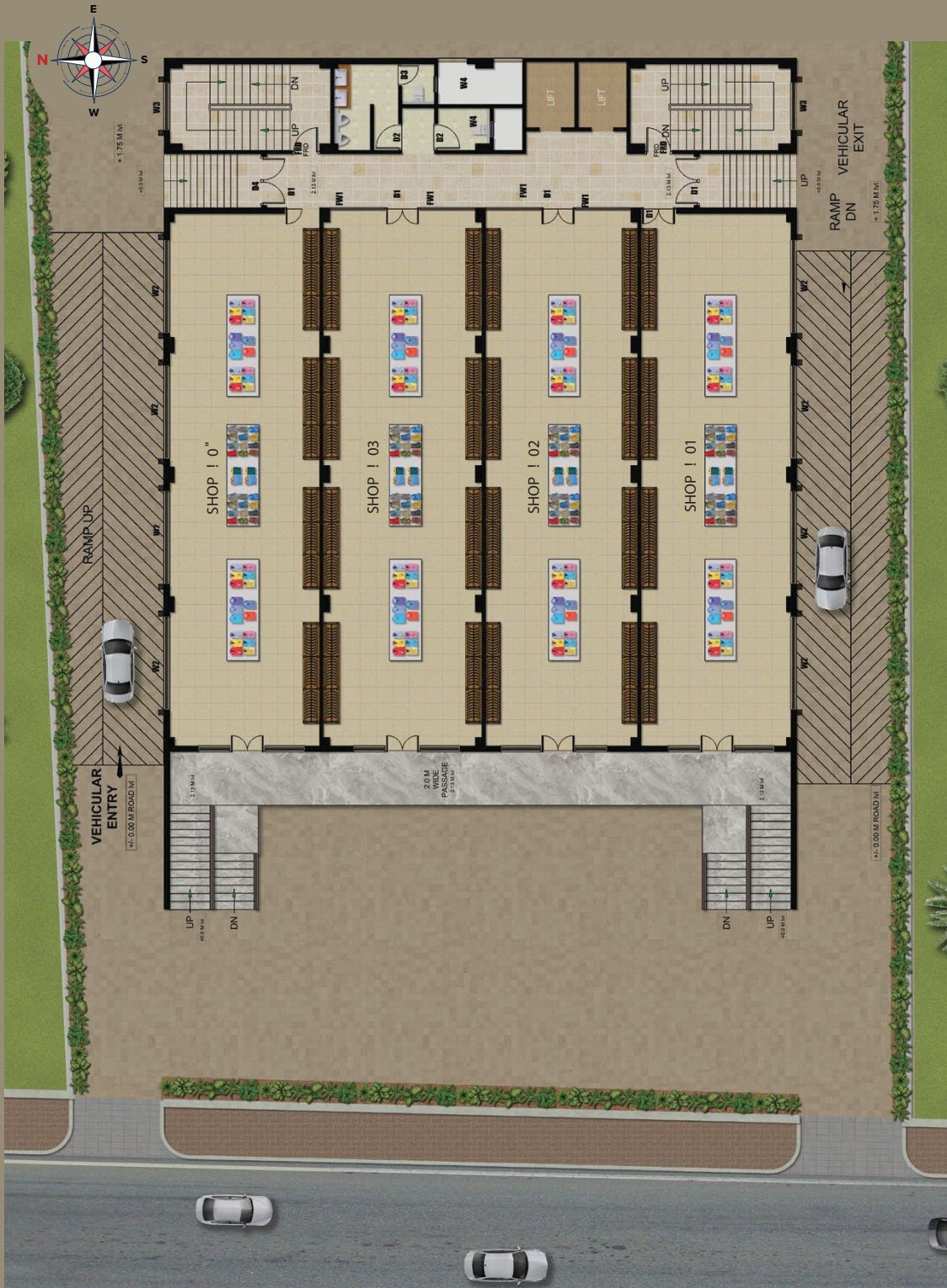
28 shops



4 shops per floor



B+G+5 Floors



		RERA CARPET AREA	BUILT UP AREA	SUPER BUILT UP AREA
SHOP-1	Lower Ground Floor	1247	1443	1804
	Ground Floor	1247	1443	1804
	1st Floor	1247	1365	1706
	2nd Floor	1247	1365	1706
	3rd Floor	1247	1365	1706
	4th Floor	1247	1365	1706
	5th Floor	1247	1365	1706
SHOP-2	Lower Ground Floor	1251	1428	1785
	Ground Floor	1251	1428	1785
	1st Floor	1251	1428	1785
	2nd Floor	1251	1428	1785
	3rd Floor	1251	1428	1785
	4th Floor	1251	1428	1785
	5th Floor	1251	1428	1785
SHOP-3	Lower Ground Floor	1251	1428	1785
	Ground Floor	1251	1428	1785
	1st Floor	1251	1428	1785
	2nd Floor	1251	1428	1785
	3rd Floor	1251	1428	1785
	4th Floor	1251	1428	1785
	5th Floor	1251	1428	1785
SHOP-4	Lower Ground Floor	1247	1443	1804
	Ground Floor	1247	1443	1804
	1st Floor	1247	1365	1706
	2nd Floor	1247	1365	1706
	3rd Floor	1247	1365	1706
	4th Floor	1247	1365	1706
	5th Floor	1247	1365	1706

Distance From



1.3 Km Nirmala Convent School
1.7 Km Don Bosco School



1.8 Km Vega Circle Mall



1.9 Km Lemon Tree Hotel



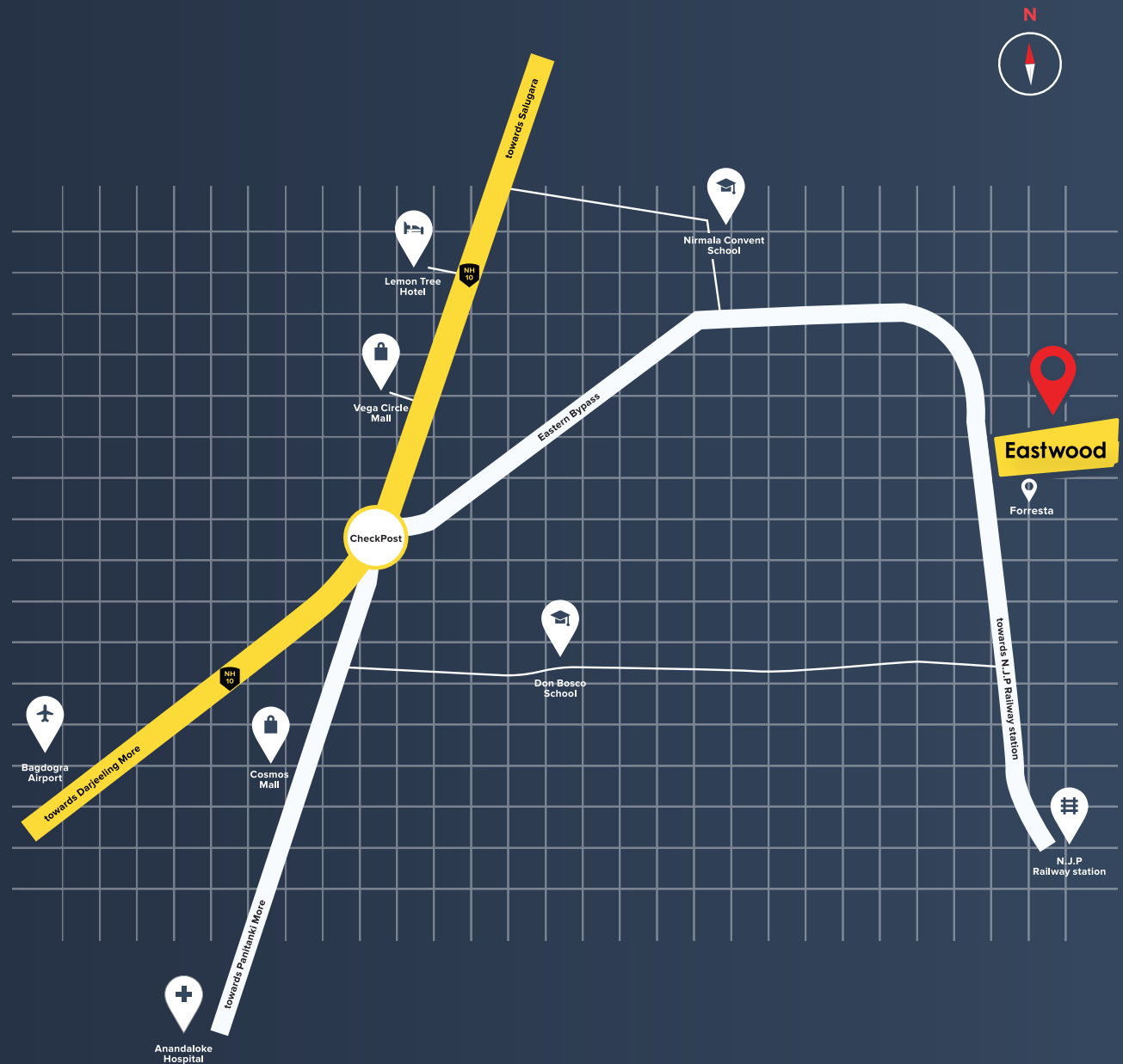
4.2 Km Anandaloke Hospital



18.3 Km Bagdogra Airport



9.9 Km N.J.P Railway Station



Eastwood

CONTACT

 +91 98538 57930

 eastwoodslg@gmail.com

DISCLAIMER

Specifications, amenities, information, images, visuals shown in this promotional document is/are indicative of the envisaged development and are subject to change. Images used are "Rendered Images" and are only indicative. The Developer reserves rights to make additions, deletions, alterations or amendments as and when it deems fit and proper. All intending Allottee/s are bound to inspect and appraise themselves of all relevant information prior to making any purchase decisions.

RERA No. : WBRERA/P/JAL/2023/000038

Project Developed by :

